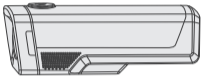





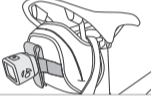



Bontrager Ion Elite R and Flare R City

trekbikes.com

PN 1052057

Parts list

	Ion Elite R	Accessories (purchase separately)
Light		Helmets (Blendr mount system) * Circuit Model 21764 Rally Model 21797 
Mount	Quick-connect plus mount Designed to work with 22.2, 25, 31.8, and 35mm handlebars. PN W593503 	Bontrager Helmet Bracket PN 428462 
Charging Cable	Micro USB Cable PN W585319 (2-wire)  Replacement PN W559136 (4-wire)	
	Flare R City	
Light		Bontrager seat pack clip PN W528503 Clip-style light mount attaches to seat bags, backpacks, belts, and pockets. 
Mount	Quick-connect bracket for tail light PN W533846 	

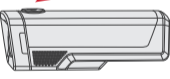
WARNING

If you cannot see other people on the road or path, or other people cannot see you, you could have an accident. Make sure your lights are set up, operating correctly, and that batteries are charged.

Basic operation Ion Elite R (see Table 1)

To turn on, double click (similar to a computer mouse) the power button.
To turn off, press and hold the power button. To change mode, quick-press the power button.
NOTE: When turned on, the light will return to the last active mode.

Table 1
Modes, run times, and battery life

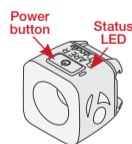
Power Button/Status LED	Mode	Max Output (lumens)	Run time (hours)	Power Button/Status LED Color	Battery Life, %
	High	1000	1.5	Green Steady	25% – 100%
	Medium	650	3		
	Low	350	6	Red Steady	5% – 25%
	Night Flash	200	26	Red Flashing	Less than 5%
	Day Flash	300	22		

WARNING: FRONT LIGHT

The light may be hot and could cause a burn or damage material it may contact. Do not activate (turn on) light in enclosed area.

Basic operation Flare R City (see Table 2)

To power on, press the power button.
The light will be in the output mode last used.
To power off, press and hold the power button until the light turns off.



Auto brightness

To disable or enable auto brightness, press and hold the power button for 8 seconds. The main LED will flash once. The lights automatically adjust their brightness for maximum visibility and battery conservation. The Flare R City gets brighter as ambient light increases (day), and dimmer as ambient light decreases (night).

NOTE: When auto brightness is enabled, the Flare R City modes are auto flash, or auto steady.

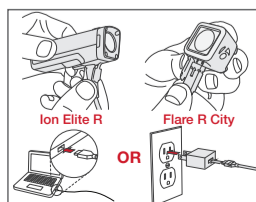
Battery charging and care (see Table 3)

Both the Ion Elite R and Flare R City are fully charged in the packaging, but we recommend that you charge them before first use.

To charge the battery

IMPORTANT: For best results, charge at room temperature in a dry place. Use a quality CE or UL approved USB charger rated for 500 mA or greater. Avoid extreme conditions including wet, cold, or extremely hot.

1. Open the USB port cover.
2. Plug the Micro charger cable into the USB port on the light.
3. Plug the cable into a computer or wall adapter.
4. When the charge is complete, unplug the Micro charger cable and close the USB port cover.



IMPORTANT: Ensure the USB cover is latched before riding in rain or in wet conditions. If the USB cover is not closed, damage to the light may occur.

About this product

The **Ion Elite R** provides enough power to light up any road or trail, and the **Flare R City** gives you the added safety of a rear daytime running light. Both are USB-rechargeable and feature a distinctive Day Flash mode that is visible up to 1.2 miles (2km) and 0.5 miles (0.9km) away respectively.

WARNING

Do not use if the battery is impacted. Also do not puncture, crush, deform, disassemble, or heat a lithium-ion battery above the permitted temperature. Inflicted damage to the battery may result in a fire, explosion, or coming in contact with specks of lithium or lithium dust.

IMPORTANT: Check your local lighting laws. Flashing lights and full brightness may not be allowed in all locations. Ion Elite R and Flare R City do not conform to the German road traffic regulation StVZO.

Specifications

- **Ion Elite R:** 4900mAh, 3.63V, 17.787Wh Lithium-ion battery
- **Flare R City:** 250mAh, 3.7Vdc, 0.9Wh
- **Battery charging and operating temperature:** 32°F to 104°F (0°C to 40°C)
Reduced performance when operating below freezing.

For more information

If you need help not offered by this manual, talk to your Bontrager retailer or visit bontrager.com.

Table 2

Flare R City mode change

Quick-press the power button. Each press moves to the next mode.

Mode*	Lumen Output (peak)	Runtime (hours)	Auto Brightness	
Auto flash	Day	35	8	Yes
	Night	35	16	Yes
Auto steady	Day	20	3	Yes
	Night	2	20	Yes

*With auto brightness enabled.

Table 3

Ion Elite R battery charging and care

Power Button/Status LED Color	Charge, %	Charge Duration (hours)
Red Flash	0% – 75%	12
Green Flash	75% – 99%	
Green Steady!	100%	

1. When fully charged, status LED remains steady for 1 minute then turns off.
2. When plugged in after the battery is completely discharged, it may take a minute for the LED indicator to turn on indicating a charge is occurring.

Flare R City battery status feature

The status LED tells the percent of battery charge that remains.

Red steady	5% to 25%	1.5
Red flashing	Less than 5%	

Low battery feature Flare R City

The light automatically changes to low battery flash mode when the battery supply goes below 5%. This extends the light output for an additional hour.

Caring for the battery

Store the light at room temperature in a dry place. Avoid moisture, or extreme hot or cold. Store the light in the charged condition. Avoid 'deep discharge'. Battery life will decrease if the battery is stored in a fully discharged condition.

Over time, the run time of the battery will diminish. Expect about 500 full charges, depending on care. After a full life, the battery will continue to charge but with a lower run time. When the run time is unsatisfactory, do not open the case of the light or incinerate; please recycle.

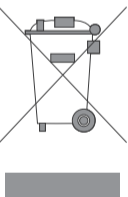
Traveling with the battery

When traveling by air, place the light, plus the lithium ion battery(s) in your carry-on.

Recycling

Please recycle the light with the battery. In the US, you can find out where to do this at www.call2recycle.org.

This symbol on the product(s) and / or accompanying documents means that used electrical and electronic products should not be mixed with general household waste. For proper treatment, recovery and recycling, outside the US, please take this product(s) to designated collection points. Alternatively, in some countries you may be able to return your products to your local retailer upon purchase of an equivalent new product. Disposing of this product correctly will help save valuable resources and prevent any potential negative effects on human health and the environment, which could otherwise arise from inappropriate waste handling. Please contact your local authority for further details of your nearest designated collection point. Penalties may be applicable for incorrect disposal of this waste, in accordance with your national legislation.

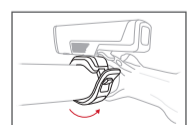


Ion Elite R installation and special features

1. Slide the light onto the quick-connect plus mount until it locks in place.

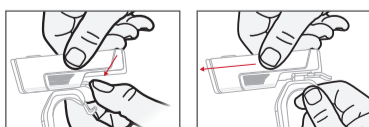


2. Stretch the mount strap around the handlebar and connect the hook in the appropriate slot. When correctly installed, the light should be parallel to the ground.



Removal

1. Press down on the mount release tab.
2. Slide the light forward to remove.



Low battery feature

When the battery charge drops below 5% the light automatically adjusts the output brightness to 50 lumens. This extends the light output for an additional 30 minutes.

Enable/disable trail configuration

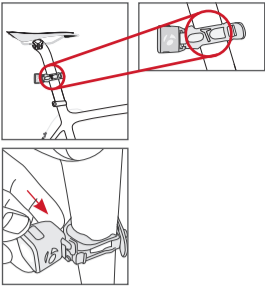
You can disable the flash modes and enable steady modes while riding in the dark. To enable Trail Configuration mode, press and hold the power button for 8 seconds. The light will turn off and the main LED will flash once. To disable, repeat the process.

Reset

To reset the light to factory default settings, with the light on, press and hold the power button for 15 seconds. The main LED will flash once at 8 seconds, and again at 15 seconds. Release the button after the second flash.

Flare R City installation

1. Install the quick-connect bracket on the seatpost with the lever to the drive side of the bike. When installed properly, the lens will be perpendicular to the ground and the saddle icon will point the same direction as the saddle on the bike.
2. Stretch the strap around the seatpost and connect to the hook.
3. Slide the light onto the bracket.



Statements of Regulatory Compliance

FCC Compliance

Ion Elite R

This device complies with part 15 of the FCC Rules. Operation is subject to the following conditions: (1) this device may not cause harmful interference, and (2) this device must accept any interference received, including interference that may cause undesired operation.

NOTE: This equipment has been tested and found to comply with the limits for a Class B digital device, pursuant to Part 15 of the FCC Rules. These limits are designed to provide reasonable protection against harmful interference in a residential installation. This equipment generates uses and can radiate radio frequency energy and, if not installed and used in accordance with the instructions, may cause harmful interference to radio communications. However, there is no guarantee that interference will not occur in a particular installation.

This product may cause interference to radio equipment and should not be installed near maritime safety communications equipment or other critical navigation or communication equipment operating between 0.45-30 MHz.

If this equipment does cause harmful interference to radio or television reception, which can be determined by turning the equipment off and on, the user is encouraged to try to correct the interference by one or more of the following measures:

- Reorient or relocate the receiving antenna.
- Increase the separation between the equipment and receiver.
- Connect the equipment into an outlet on a circuit different from that to which the receiver is connected.
- Consult the dealer or experienced radio / TV technician for help.

NOTES: TREK BICYCLE CORPORATION IS NOT RESPONSIBLE FOR ANY RADIO OR TV INTERFERENCE CAUSED BY UNAUTHORIZED MODIFICATIONS TO THIS EQUIPMENT. ANY CHANGES OR MODIFICATIONS NOT EXPRESSLY APPROVED BY TREK BICYCLE CORPORATION OF THIS DEVICE COULD VOID THE USER'S AUTHORITY TO OPERATE THE DEVICE.

European Union Compliance

Trek Bicycle Corporation and Bontrager hereby declare that the lighting device(s) identified as 'Ion Elite R' and 'Flare R City' are in compliance with the following European Directives:

Ion Elite R

- EMC Directive 2014/30/EU
- Low Voltage Directive 2014/35/EU
- RoHS Directive 2011/65/EU

Flare R City

- EMC Directive 2014/30/EU
- RoHS Directive 2011/65/EU

The full text of the EU declaration of conformity is available from your dealer, or at the following internet address: <http://www.trekbikes.com/support>

The Ion Elite R and the Flare R City do not conform to the German StVZO regulations.

Trek Bicycle Corporation contact information:

North America

Trek Bicycle Corporation
801 West Madison Street
Waterloo, WI 53594 USA
Tel: 800-313-8735

Europe

Bikeurope BV
Ceintuurbaan 2-20C
3847 LG Harderwijk
The Netherlands
Tel: +31 (0)88 4500699

Australia

Trek Bicycle Corp. Au.
8 Townsville Street
(Level One)
Fyshwick (ACT)
2609 AU
Tel: +61 (02) 61 732 400

Industry Canada Compliance

CAN ICES-3(B)/NMB-3(B)

This device complies with Industry Canada license-exempt RSS standard(s).

Operation is subject to the following two conditions: (1) this device may not cause interference, and (2) this device must accept any interference, including interference that may cause undesired operation of the device.

Leprésent appareil est conforme aux CNR d'Industrie Canada applicable aux appareils radio. Exempt de licence. L'exploitation est autorisée aux deux conditions suivantes: (1) l'appareil ne doit pas produire de brouillage, et (2) l'utilisateur de l'appareil doit accepter tout brouillage radioélectrique subi, meme si le brouillage est susceptible d'en compromettre le fonctionnement.

This Ion Elite R lighting equipment complies with FCC and IC radiation exposure limits set forth for an uncontrolled environment. Status of the listing in the Industry Canada's REL (Radio Equipment List) can be found at the following web address: <http://www.ic.gc.ca/app/sitt/reitel/srch/nwRdSrch.do?lang=eng>

Additional Canadian information on RF exposure also can be found at the following web address: <http://www.ic.gc.ca/eic/site/smt-gst.nsf/eng/sf08792.html>

Cet appareil est conforme aux limites d'exposition à la fréquence radio (FR) d'IC et de FCC. La puissance de sortie émise par l'appareil de sans fil Ion Pro RT est inférieure à la limite d'exposition aux fréquences radio d'Industry Canada (IC). Cet appareil est en contact direct avec l'utilisateur dans des conditions normales d'utilisation. L'émetteur ne doit pas être co-implémenté ou utilisé conjointement avec une autre antenne ou un autre émetteur. Ce périphérique est homologué pour l'utilisation au Canada. Pour consulter l'entrée correspondant à l'appareil dans la liste d'équipement radio (REL - Radio Equipment List)d'Industry Canada rendez-vous sur: <http://www.ic.gc.ca/app/sitt/reitel/srch/nwRdSrch.do?lang=fra>

Pour des informations supplémentaires concernant l'exposition aux RF au Canada rendezvous sur: <http://www.ic.gc.ca/eic/site/smt-gst.nsf/fra/sf08792.html>

If you wish to see these manuals in another language, please visit www.trekbikes.com/support and look for the Ion Elite R & Flare R City manual on the Manuals and user guides page.

DE Wenn Sie dieses Handbuch in einer anderen Sprache lesen möchten, besuchen Sie bitte www.trekbikes.com/support und suchen Sie auf der Seite Handbücher und Benutzerhandbücher nach dem Ion Elite R-Handbuch.

FR Si vous souhaitez voir ce manuel dans une autre langue, rendez-vous sur le site www.trekbikes.com/support et recherchez le manuel Ion Elite R sur la page Manuels et guides de l'utilisateur.

ES Si desea ver este manual en otro idioma, visite www.trekbikes.com/support y busque el manual de Ion Elite R en la página Manuales y guías del usuario.

PL Jeśli chcesz zobaczyć tę instrukcję w innym języku, odwiedź stronę www.trekbikes.com/support i poszukaj instrukcji Ion Elite R na stronie Podręczniki i instrukcje obsługi.

PT Se você deseja ver este manual em outro idioma, visite www.trekbikes.com/support e procure o manual Ion Elite R na página Manuais e guias do usuário.

NL Als u deze handleiding in een andere taal wilt bekijken, gaat u naar www.trekbikes.com/support en zoekt u naar de Ion Elite R-handleiding op de pagina Handleidingen en gebruikershandleidingen.

JA このマニュアルを別の言語で表示したい場合は、www.trekbikes.com/supportにアクセスし、マニュアルおよびユーザーガイドページのIon Elite Rマニュアルを参照してください。

KO 이 매뉴얼을 다른 언어로보고 싶다면 www.trekbikes.com/support를 방문하여 매뉴얼 및 사용자 가이드 페이지에서 Ion Elite R 매뉴얼을 찾으십시오.

ZH 如果您希望以其他语言查看本手册,请访问www.trekbikes.com/support,并在手册和用户指南页面上查找Ion Elite R手册。