



Ion Pro RT
Ion 200 RT
Flare RT

www.bontrager.com

BT18_IONPRORT_ION200RT_FLARERT_V4 PN 572345

About this manual

This manual is for Bontrager lights Ion Pro RT, Ion 200 RT (headlights) and Flare RT (tail light). RT indicates light is rechargeable and remote controllable when paired with Bontrager Transmitt remote, PN 502865, or another ANT+ compatible device.

⚠ WARNING

The light may be hot and could cause a burn or damage material it may contact. Do not activate (turn on) light in enclosed area. Avoid accidental wireless activation.

Please read the additional Warning, page 2, before using this light.

Specifications

- Ion Pro RT: 4800 mAh, 3.6 Vdc, 17.3 Wh, lithium Ion battery
- Ion 200RT and Flare RT: 420mAh, 3.7 Vdc, 1.6 Wh lithium polymer battery

For more information

If you need help not offered by this manual, talk to your Bontrager retailer or visit trekbikes.com.

List of parts

You may have purchased one or more of the following lights.

	Ion Pro RT	Ion 200 RT	Flare RT
Light			
Mount	 25.4 - 35.0mm Adjustable Bar Mount with shim PN W552375	 Quick Connect 0° Mounting Bracket PN W527649 *Fits 22.2mm to 35mm bars.	 Quick Connect 16° Bracket for tail light PN W533846 Mounts to the seatpost or a rack.
Charging Cable	 Fast Charge Micro USB Cable PN W559136, (4-wire)	 Charger Cable PN W327765, (2-wire)	 Charger Cable PN W327765, (2-wire)
Accessories <i>(purchase separately)</i>	Head Lights Helmets (Blendr mount system) * Circuit Model 21764 * Rally Model 21797 Bontrager Helmet Bracket PN 428462 	22.2-31.8mm Adjustable Bar Mount PN W530421 22.2-35.0mm Adjustable Sync Bracket Model 418921 	Tail Lights Rack attachment Use an 8mm M5 bolt and washer, PN 537061 with Quick Connect 16° bracket supplied, or with complete rack mount kit, PN 552376 Seat Pack Clips Metal, PN 424905 Plastic, PN W528503
	Transmitt Remote Model 502865 *Compatible with all Bontrager RT lights. 	Bontrager Garmin Edge 1030 GPS Computer Model 21831 	Speed Concept Attachment Take off the reflector mounting bracket, PN W327560 and replace the end with the Flare Round Mounting Kit interface, PN 418932

Basic operation (see Table 1)

To turn on, double click (Ion Pro RT) (similar to a computer mouse) and single click (Ion 200 RT / Flare RT) the power button. To turn off, press and hold the power button. To change mode, quick-press the power button.

NOTE: When turned on Ion Pro RT, Ion 200 RT and the Flare RT will return to the last active mode.

Table 1. Modes, runtimes, and battery life

Model	Power Button/Status LED	Mode	Max Output (lumens)	Runtime (hours) ²	Power Button/Status LED Color	Battery Life, %
Ion Pro RT		High	1300	1.5	Green Steady	25 to 100%
		Medium	800	3		
		Low	400	6	Red Steady	5 to 25%
		Night Flash	200	26		
		Day Flash	300	22		
Ion 200 RT		High	200	1.5	Green Steady	25 to 100%
		Medium	100	3		
		Low	5	14.5	Red Steady	5 to 25%
		Night Flash	5	30		
		Day Flash ¹	100	12		
Flare RT		Day Flash ¹	90	6	Green Steady	25 to 100%
		All Day Flash ¹	45	12		
		Night Flash	5	15	Red Steady	5 to 25%
		Day Steady ¹	25	4.5		
		Night Steady	5	13.5		

¹Supports auto brightness. ²Not including 30 minute low battery feature

Battery charging and care (see Table 2)

Although the light is charged at the factory, it is recommended to charge it before first use.

To charge the battery

IMPORTANT: For best results, charge at room temperature in a dry place. Use a quality CE or UL approved USB charger rated for 500 mA or greater. Avoid extreme conditions including wet, cold, or extremely hot.

1. Open the USB port cover.
2. Plug the Micro charger cable into the USB port on the light.
3. Plug the cable into a computer or wall adapter.
4. When the charge is complete, unplug the Micro charger cable and close the USB port cover.

IMPORTANT: Ensure the USB cover is latched before riding in rain or in wet conditions. If the USB cover is not closed, damage to the light may occur.

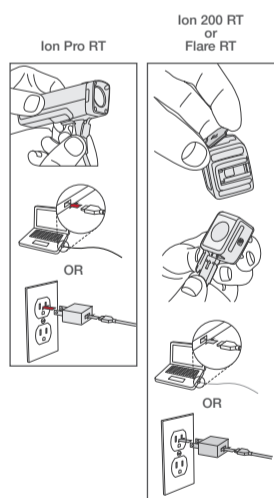


Table 2. Battery charging and care

Model	Power Button/Status LED Color	Charge, %	Charge Duration (hours)
Ion Pro RT	Red Flash ¹	<25%	7 ³
	Yellow Flash ¹	25% - 75%	
	Green Flash ¹	75% - 99%	15
Ion 200 RT	Green Steady ²	100%	2
	Red Flash	0% - 75%	
	Green Flash	75% - 99%	
Flare RT	Green Steady ²	99% - 100%	2
	Red Flash	0% - 75%	
	Green Flash	75% - 99%	

¹Flashes fast (2 Hz) with 4 wire USB cable and a 500mA charger, or slow (1 Hz) with 2 wire USB cable

²When fully charged, status led remains steady for 1 minute then turns off

³Requires a 4 wire USB cable, supplied, and a 500mA charger

Caring for the battery

Store the light at room temperature in a dry place. Avoid moisture, or extreme hot or cold.

Store the light in the charged condition. Avoid 'deep discharge'. Battery life will decrease if the battery is stored in a fully discharged condition.

Over time, the run time of the battery will diminish. Expect about 500 full charges, depending on care. After a full life, the battery will continue to charge but with a lower run time. When the run time is unsatisfactory, do not open the case of the light or incinerate; please recycle.

Traveling with the battery

Li-ion batteries cannot be shipped by air due to airline regulations. When traveling by air, place the light in your carry-on.

Recycling

Please recycle the battery. In the US, you can find out where to do this at www.call2recycle.org

This symbol on the product(s) and / or accompanying documents means that used electrical and electronic products should not be mixed with general household waste. For proper treatment, recovery and recycling, outside the US, please take this product(s) to designated collection points. Alternatively, in some countries you may be able to return your products to your local retailer upon purchase of an equivalent new product. Disposing of this product correctly will help save valuable resources and prevent any potential negative effects on human health and the environment, which could otherwise arise from inappropriate waste handling. Please contact your local authority for further details of your nearest designated collection point. Penalties may be applicable for incorrect disposal of this waste, in accordance with your national legislation.



Ion Pro RT information, installation, and special features

Installation

1. Loosen knob and open.
2. Adjust for bar size (31.8mm or 35mm).
3. Close and tighten knob.
4. Slide light onto mount until it locks in place.

NOTE: Use provided shim to fit 25.4 bars.

Removal

5. Press down.
6. Slide light to remove.

Low battery feature

When the battery charge drops below 5% the light automatically adjusts the output brightness to 50 lumens. This extends the light output for an additional 30 minutes.

Locking/Unlocking the mode

Turn on and select the desired mode, then press and hold the power button 8 seconds to select it. The light will turn off and the main LED will flash once. To unlock, repeat the process.

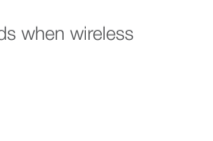
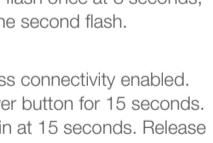
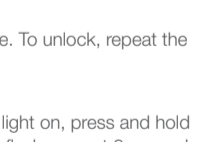
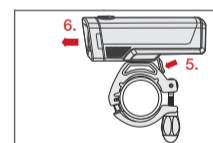
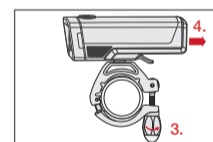
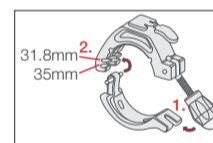
Reset

To reset the light to factory default settings, with the light on, press and hold the power button for 15 seconds. The main LED will flash once at 8 seconds, and again at 15 seconds. Release the button after the second flash.

Wireless Communication

The light is shipped with ANT+ and Bluetooth wireless connectivity enabled. To disable, with the light off, press and hold the power button for 15 seconds. The main LED will flash once at 8 seconds, and again at 15 seconds. Release the button after the second flash.

NOTE: The status LED flashes blue every 15 seconds when wireless is enabled.



Pairing to the Transmitr Remote, Bontrager Garmin Edge® GPS computer or select Garmin Edge® computers

The Transmitr Remote (or select Garmin Edge computers, sold separately) allows remote control of the light. This feature is only available on the Ion Pro RT, Ion 200 RT, and the Flare RT as well as other compatible Transmitr lights.

For more complete instructions, refer to the Transmitr manual at trekbikes.com. For Garmin related instruction and a complete listing of compatible Edge devices visit support.garmin.com.

Before starting, place the remote and all lights within a small area. Move 15 feet from other Transmitr / ANT+ compatible lights to prevent unintentional pairing. If a light is unintentionally paired, restart the pairing process at the beginning.

NOTE: All pairings must be done in a single session. After pairing is finished, pairing any additional lights will require that you repeat the entire pairing procedure.

- Place the light close to the Transmitr Remote (within 15cm / 6in).
- Quick-press the power button on the light to turn it on, then quick-press to turn it off again.

NOTE: After completing this step, do not press the power button on the light again until pairing is complete.

- Press-and-hold the center button on the Transmitr Remote for at least 8 seconds. When the corner buttons flash, release the center button.

- While the remote searches for a light, its center button flashes red. When the Transmitr Remote finds a light, the center button on the remote will change from red to green, and the found light will flash.

- While the found light is still flashing, quick-press the button on the Transmitr Remote to which you would like to pair the light. The selected button will glow, and the found (paired) light will stop flashing and turn off.

NOTE: After the pairing, the center button on the remote will flash red until the Transmitr Remote finds another available light.

- Repeat Step 4 and Step 5 for each additional light to be paired.

To exit pairing

- When all lights are paired, quick-press the center button on the remote. The button will stop flashing and turn off.

To verify pairing

- Quick-press the center button on the remote to turn on all paired lights.
- Press-and-hold the center button to turn off all of them.
- Turn on each light individually. Quick-press each paired corner button on the remote to turn on the individual light(s).
- Press-and-hold the same corner button to turn off the light.

Using the Transmitr Remote

To turn on all lights

ON: Quick-press the center button.

OFF: Press and hold the center button.

To turn on an individual light

ON: Quick-press the corner button that controls the light.

OFF: Press and hold the same button.

To change modes of an individual light

Each quick-press of a button that controls a light will cycle through the modes.

To see battery power status on the remote

When a corner button is pressed, the center button will show the battery status of the light.

Center Button Color	Battery Life, %
Flashing red	Less than 5
Red	Between 5 and 25
Green	More than 25

Trek Bicycle Corporation contact information:

North America

Trek Bicycle Corporation
801 West Madison Street
Waterloo, WI 53594 USA
Tel: 800-313-8735

Europe

Bikeurope BV
Ceintuurbaan 2-20C
3847 LG Harderwijk
The Netherlands
Tel: +31 (0)88 4500699

Australia

Trek Bicycle Corp. Au.
8 Townsville Street
(Level One)
Fyshwick (ACT)
2609 AU
Tel: +61 (02) 61 732 400

Statements of Regulatory Compliance

FCC Compliance

Ion Pro RT FCC ID: 2AHXD552373

Ion 200 RT/Flare RT FCC ID: 2AHXD553852

This device complies with part 15 of the FCC Rules. Operation is subject to the following conditions: (1) this device may not cause harmful interference, and (2) this device must accept any interference received, including interference that may cause undesired operation.

NOTE: This equipment has been tested and found to comply with the limits for a Class B digital device, pursuant to Part 15 of the FCC Rules. These limits are designed to provide reasonable protection against harmful interference in a residential installation. This equipment generates uses and can radiate radio frequency energy and, if not installed and used in accordance with the instructions, may cause harmful interference to radio communications. However, there is no guarantee that interference will not occur in a particular installation.

This product may cause interference to radio equipment and should not be installed near maritime safety communications equipment or other critical navigation or communication equipment operating between 0.45-30 MHz.

If this equipment does cause harmful interference to radio or television reception, which can be determined by turning the equipment off and on, the user is encouraged to try to correct the interference by one or more of the following measures:

- Reorient or relocate the receiving antenna.
- Increase the separation between the equipment and receiver.
- Connect the equipment into an outlet on a circuit different from that to which the receiver is connected.
- Consult the dealer or experienced radio / TV technician for help.

NOTES: TREK BICYCLE CORPORATION IS NOT RESPONSIBLE FOR ANY RADIO OR TV INTERFERENCE CAUSED BY UNAUTHORIZED MODIFICATIONS TO THIS EQUIPMENT. ANY CHANGES OR MODIFICATIONS NOT EXPRESSLY APPROVED BY TREK BICYCLE CORPORATION OF THIS DEVICE COULD VOID THE USER'S AUTHORITY TO OPERATE THE DEVICE.

Ion 200 RT information, installation, and special features

Installation

To attach with the Quick Connect 0° offset bracket

- Place the quick connect on the handlebar with the hook in front.
- Stretch the strap under the bar and connect to the hook.

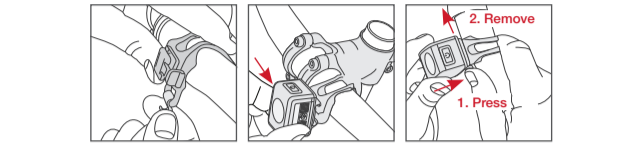
NOTE: Use the second hook to latch excess strap.

- Slide the Ion 200 RT onto the bracket until it clicks. The power button should be facing up and the lens of the light should be perpendicular to the road.

Removal

Press down on the tab and slide the light away from the lever.

Alternatively, you can remove the entire quick-connect bracket, with the light attached.



Low battery feature

When the battery charge drops below 5% the light automatically adjusts the output brightness to 5 lumens. This extends the light output for an additional 30 minutes.

Locking/Unlocking the mode

Turn on and select the desired mode, then press and hold the power button 8 seconds to select it. The light will turn off and the main LED will flash once. To unlock, repeat the process.

Auto brightness

The light is shipped with an ambient light sensor enabled. The light automatically changes modes with ambient light conditions. It changes from Day Flash to High Steady. To disable, with the light off, press and hold the power button 8 seconds. The light will flash once.

NOTE: When auto brightness is enabled, all modes are manually accessible.

Reset

To reset the light to factory default settings, with the light on, press and hold the power button for 15 seconds. The main LED will flash once at 8 seconds, and again at 15 seconds. Release the button after the second flash.

Wireless Communication

The light is shipped with ANT+ and Bluetooth wireless connectivity enabled. To disable, with the light off, press and hold the power button for 15 seconds. The main LED will flash once at 8 seconds, and again at 15 seconds. Release the button after the second flash.

NOTE: The status LED flashes blue every 15 seconds when wireless is enabled.

Industry Canada Compliance

Ion Pro RT - (P/N 552373)

IC ID: 21334-552373

Ion 200 RT (P/N 553853)

IC ID: 21334-553852

Flare RT (P/N 553852)

IC ID: 21334-553852

CAN ICES-3(B)/NMB-3(B)

This device complies with Industry Canada license-exempt RSS standard(s).

Operation is subject to the following two conditions: (1) this device may not cause interference, and (2) this device must accept any interference, including interference that may cause undesired operation of the device.

L'appareil est conforme aux CNR d'Industrie Canada applicable aux appareils radio. Exempt de licence. L'exploitation est autorisée aux deux conditions suivantes:

(1) l'appareil ne doit pas produire de brouillage, et (2) l'utilisateur de l'appareil doit accepter tout brouillage radioélectrique subi, même si le brouillage est susceptible d'en compromettre le fonctionnement.

This Ion Pro RT lighting equipment complies with FCC and IC radiation exposure limits set forth for an uncontrolled environment. The radiated output power of the Ion Pro RT Wireless Device is below the Industry Canada (IC) radio frequency exposure limits, when used as directed in this manual (Note: attaching this light to a helmet changes the absorption characteristics of the light-body system). This equipment is in direct contact with the body of the user under normal operating conditions. This transmitter must not be colocated or operating in conjunction with any other antenna or transmitter. Status of the listing in the Industry Canada's REL (Radio Equipment List) can be found at the following web address: <http://www.ic.gc.ca/app/sitt/reltel/srch/ nwRdSrch.do?lang=eng>

Additional Canadian information on RF exposure also can be found at the following web address: <http://www.ic.gc.ca/eic/site/smt-gst.nsf/eng/sf08792.html>

Cet appareil est conforme aux limites d'exposition à la fréquence radio (FR) d'IC et de FCC. La puissance de sortie émise par l'appareil de sans fil Ion Pro RT est inférieure à la limite d'exposition aux fréquences radio d'Industry Canada (IC). Cet appareil est en contact direct avec l'utilisateur dans des conditions normales d'utilisation. L'émetteur ne doit pas être co-implémenté ou utilisé conjointement avec une autre antenne ou un autre émetteur. Ce périphérique est homologué

pour l'utilisation au Canada. Pour consulter l'entrée correspondant à l'appareil dans la liste d'équipement radio (REL - Radio Equipment List)d'Industry Canada rendez-vous sur:

<http://www.ic.gc.ca/app/sitt/reltel/srch/nwRdSrch.do?lang=fra>

Pour des informations supplémentaires concernant l'exposition aux RF au Canada rendezvous sur:

<http://www.ic.gc.ca/eic/site/smt-gst.nsf/fra/sf08792.html>

Flare RT information, installation, and special features

Installation

To attach with the Quick Connect 16° offset bracket



IMPORTANT: The seatpost/saddle icon shows that the lens is oriented perpendicular to the ground to optimize visibility.

NOTE: Use the second hook to latch any excess strap.

To attach to a seat pack

Attach the seat pack clip to the bag loop. To optimize visibility, ensure the light lens is oriented perpendicular to the ground.

To attach to a rack

Remove the quick connect clip from the rubber strap and attach to a rack with a M5 bolt and washer, sold separately, *PN 537061*.

Low battery feature

When the battery charge drops below 5% the light automatically adjusts the output brightness and begins to flash. This extends the light output for an additional 30 minutes.

Locking/Unlocking the mode

Turn on and select the desired mode, then press and hold the power button 8 seconds to select it. The light will turn off and the main LED will flash once.

To unlock, repeat the process.

Auto brightness

The light is shipped with an ambient light sensor enabled. The light automatically changes modes with ambient light conditions. It changes from Day Flash or All Day Flash to Night Flash, **OR** Day Steady to Night Steady. To disable, with the light off, press and hold the power button 8 seconds. The light will flash once.

NOTE: When auto brightness is enabled, Day Flash, All Day Flash and Day Steady are manually accessible.

Reset

To reset the light to factory default settings, with the light on, press and hold the power button for 15 seconds. The main LED will flash once at 8 seconds, and again at 15 seconds. Release the button after the second flash.

Wireless Communication

The light is shipped with ANT+ and Bluetooth wireless connectivity enabled. To disable, with the light off, press and hold the power button for 15 seconds. The main LED will flash once at 8 seconds, and again at 15 seconds. Release the button after the second flash.

NOTE: The status LED flashes blue every 15 seconds when wireless is enabled.

⚠ WARNING
A bicycle without correct lights and reflectors might be difficult for other people to see, and you might not be able to see. If you cannot see, or other people cannot see you, you could have an accident. Make sure your lights operate correctly and that batteries are charged.

European Union Compliance

Ion Pro RT and Ion 200 RTdo not comply with German StVZO regulations!

Trek Bicycle Corporation and Bontrager hereby declare that the wireless device identified as

'Ion Pro RT', 'Ion 200 RT' and 'Flare RT'are in compliance with the following European Directives:

- Radio Equipment Directive 2014/53/EU (Ion Pro RT only)
- EMC Directive 2014/30/EU
- Low Voltage Directive 2014/35/EU (Ion Pro RT only)
- RoHS Directive 2011/65/EU

The full text of the EU declaration of conformity is available from your dealer, or at the following internet address: <http://www.trebikes.com/support>